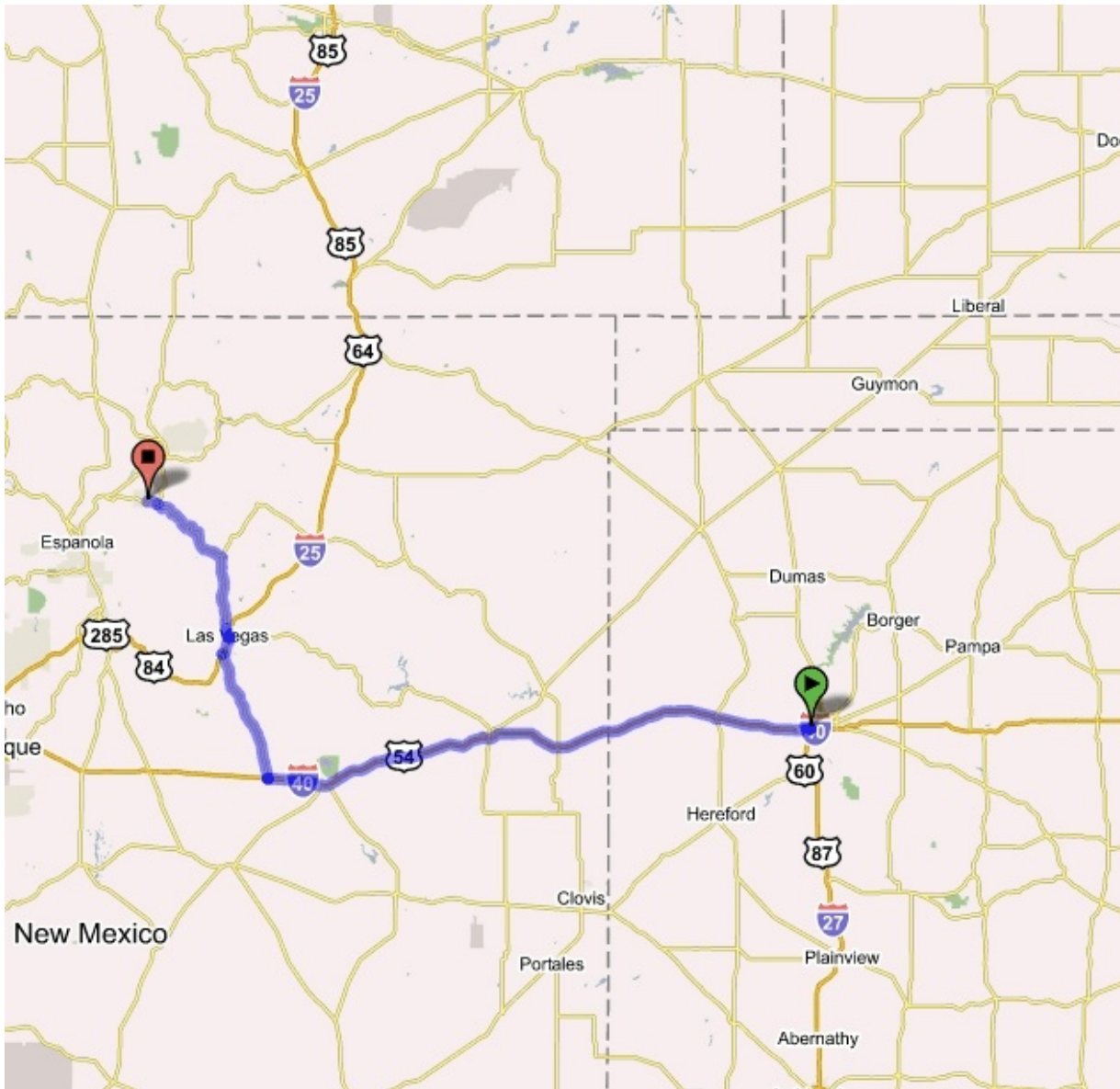


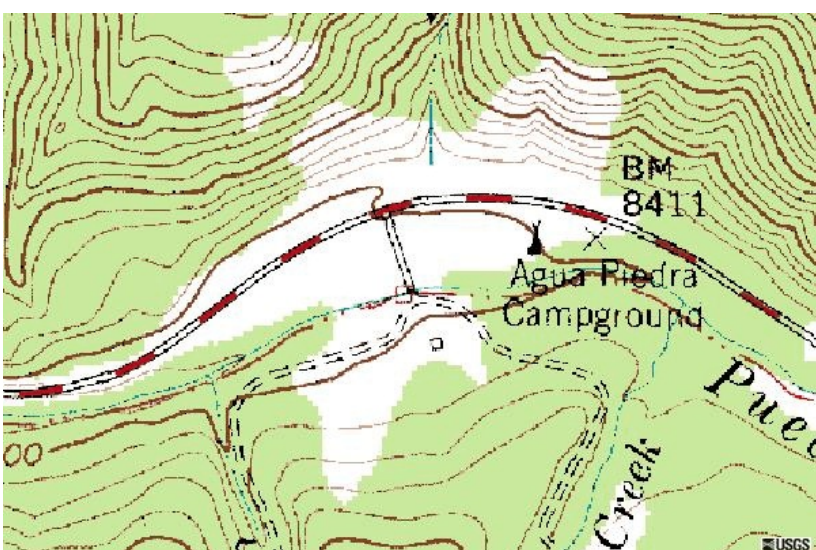
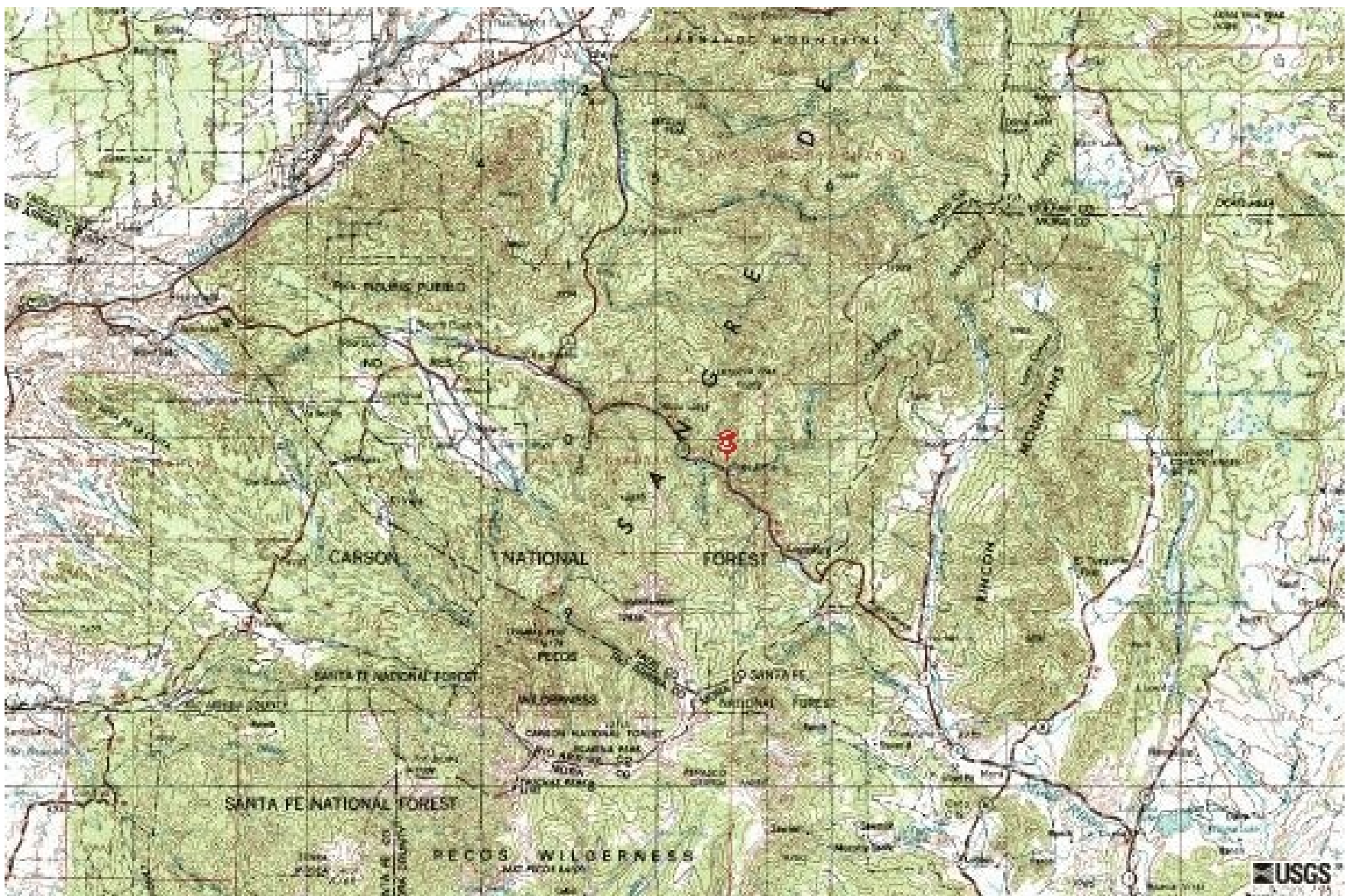
Tres Ritos Snow Camp Directions and Maps



Start from:	1615 Bellaire St, Amarillo, TX 79106
Arrive at:	Tres Ritos, NM 87579
Distance:	293 mi (about 5 hours 16 mins)

Reverse directions

1. Head **south** from **Bellaire St** - go **0.4 mi**
2. Turn **right** at **W I-40** - go **1.0 mi**
3. Take the **I-40 W** ramp - go **182 mi**
- ...
4. Take the **US-84 N** exit #256 to **Las Vegas** - go **0.1 mi**
5. Take the ramp to **North Las Vegas** - go **0.1 mi**
6. Bear **right** at **US-84** - go **41 mi**
- ...
7. Turn **right** into the **I-25 N** entry ramp - go **5.7 mi**
8. Take the **NM-104 E/NM-65 W** exit #345 to **(I-25-BL)** - go **0.4 mi**
9. Turn **left** at **NM-104 W/NM-65 W** - go **0.1 mi**
10. Continue on **NM-65 W** - go **0.3 mi**
11. Continue on **University Ave** - go **0.2 mi**
12. Turn **right** at **7th St** - go **2.7 mi**
13. Continue on **NM-518** - go **54 mi**
- ...
14. Continue on **NM-75** - go **3.7 mi**



Campsite is at Agua Piedra Campground, which is one mile NW of Tres Ritos at mile marker 51, on the scout side (left side coming from Tres Ritos) of the road.



Agua Piedra Campground